



Rewind Installation MUSÉE D'ART CONTEMPORAIN DES LAURENTIDES 2005

TOUR

Bonnie Baxter: Rewind

Andrée Matte, Curator

Musée d'art contemporain des Laurentides
The Laurentians Museum of Contemporary Art
101, place du Curé-Labelle
Saint-Jérôme (Québec)
450.432.7171
www.museelaurentides.ca

Bonnie Baxter: Rewind

Bonnie Baxter's evolution as an artist might best be described with the phrase "punctuated equilibrium" where steady aesthetic and technical development is marked by sudden radical shifts. Around ten years ago one of those radical shifts saw the highly respected and successful printmaker begin to experiment with video and performance. *Rewind* represents a decade of transformative exploration in multiple mediums. Her process links her to a generation of artists finding a way to connect with the digital world - observing with the objectivity of the camera eye and simultaneously becoming the object of the "gaze" - embracing the immediate, the experiential. Atmospheric, haunting and a little humorous, her investigations in new media are rewound for the viewer, deconstructed and re-established in her most recent bodies of print.

The show charts a progression of ideas that are neither static nor strictly linear. By artful slight of hand, Baxter creates profound connections - seamlessly layering disparate content and tactile experiences. Her subject matter reveals not only a profound involvement with world events but a personal vision that refuses to see any aspect of life as less important than another. Her finely honed printmaker's ability to produce imagery in complex layers allows her to relate the most mundane experiences to the most exalted and profound. There is an inevitable existentialism in her work where the transcendent and the terrible are arbitrated with humour. Even the work which confronts the most hostile acts of humanity is mediated with the perspective of time implied by the combination of print techniques she applies - each eliciting their own tactile memory of historical place - the pixel precision of the digital now - the etched and ragged lines of simpler pasts.

Rewind will be focused through a single mystical sculpture reminiscent of Peter Breugel's *tower of babel*. The artistic achievements of a decade are presented as a sculpture out of which small video monitors peer - "rewinding" fragments of past works. A sound installation will audibly mimic the babel of



images through a ferment of sounds.

Images of entrances and exits created from video stills taken in Hagia Sophia and the Topkapi Palace of the Ottoman sultans in İstanbul are enlarged to a pointillist pixilation and transferred onto the transparent medium of Lexan. Appearing, life size, throughout the exhibitions space, they create a dreamlike illusion, suggesting the artist's own passage as she continues to look for ways to understand and describe her world.

Contributing to the theme of ingress are the door shaped prints selected from Baxter's various series. Synchronized video footage collected over the years from various parts of the world including Istanbul, New York, and Montréal, will be projected on the wall. The sense of perspective and psychological complexity are deepened through the mytho-historical and socio-political references that suffuse her work. Small sculptures of her Chi-chi doggie will companion the audience as the Chi-chi has come to companion the artist in her exploration of difficult subject matter. Like a film run backwards, the images of this exhibition rewind the course of a decade through the eyes of the artist. Through passageways - real and imagined - of an intimately lit exhibition space, we are reminded that nothing has been lost but simply deconstructed to create a rich diversity - not a Babel, but rather nations of thought, languages of expression which enrich each other through their differences and the insights which their juxtapositions elicit.

The history of printmaking is revealed in the layers of her newest prints. Techniques and imagery that are ostensibly incompatible find common ground. Her images push the technical boundaries of print using digital processes, UV inks, large scales and unorthodox surfaces. At the same time she layers this work with the most ancient forms of the printmaker's art with stamps, and woodblock printing. Through the correlation of objects, prints, and video images, this show bridges the gaps between traditional and experimental mediums. It mediates the boundaries between objective and subjective representation, the mundane and the transcendent, gravity and humour, the artists commitment to social engagement and the need to find comfort and reason through aesthetic expression.

The exhibition began the Canadian leg of its tour at the hosting institution,

Musée d'art contemporain des Laurentides in 2005.

Baxter has been invited to finish her tour at IMOGA, İstanbul Museum of Graphic Arts, Turkey.

See appendix A for technical requirements and practical aspects of the tour.

Contact: Christine Unger, Tour Coordinator e-mail: christineunger@videotron.ca



Babel Tower

REWIND INSTALLATION

Musée d'art contemporain des
Laurentides
2005

steel structure
10 ft x 4 x 4 feet
30 digitally printed arches on lexan on plexi glass
15 LCD screens, 7 in. each
15 video-loops with sound.



Cityscape Sequence
Video sequence, 20 min, 2000



Rewind Installation SIR WILFRED GRENFELL COLLEGE ART GALLERY, NEWFOUNDLAND (CANADA), 2006



Under a Red Mountain, (Les coquelicots series), 2005

Digital Print on Canvas
152.40 x 152.40 cm (60 in. x 60 in.)



Rewind Installation
HARCOURT HOUSE
2007, EDMONTON, ALBERTA

Created to adapt to its Harcourt House installation as seen above, the Babel Tower now consists of 5 steel-construction towers with internal but visible wiring and cables for the 25 LCD screens playing looping video excerpts. Plexiglass arches with adhered digital images surround each of the 25 screens which play both front and back. Each tower has its own set of speakers and sub-woofers for the tower's sound elements which subtly suffuse any space they are installed in.

Les coquelicots (Poppies)



Apparition 2005
Digital print on canvas
152.40 x 152.40 cm (60 in. x 60 in)



Dormir... peut-être 2005
Digital print on canvas
152.40 x 152.40 cm (60 in. x 60 in)



Matahari 2005
Digital print on canvas
152.40 x 152.40 cm (60 in. x 60 in)



Under a Red Mountain 2005
Digital print on canvas
152.40 x 152.40 cm (60 in. x 60 in)



Tedi's dream 2005
Digital print on canvas
152.40 x 152.40 cm (60 in. x 60 in)



Portal Surreal 2005
Digital print on canvas
152.40 x 152.40 cm (60 in. x 60 in)



Poppy 2005
Digital print on canvas
152.40 x 152.40 cm (60 in. x 60 in)



Melancholia Fish 2005
Digital print on canvas
152.40 x 152.40 cm (60 in. x 60 in)



Red Breath 2005
Digital print on canvas
152.40 x 152.40 cm (60 in. x 60 in)

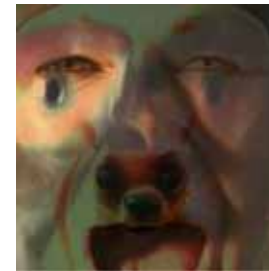


Femme verte 2005
Digital print on canvas
152.40 x 152.40 cm (60 in. x 60 in)

Baphomet



Enracinée 2005
Digital print on canvas
152.40 x 152.40 cm (60 in. x 60 in)



Chi-chi lips 2005
Digital print on canvas
152.40 x 152.40 cm (60 in. x 60 in)



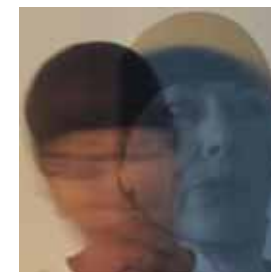
Ménagerie 2005
Digital print on canvas
152.40 x 152.40 cm (60 in. x 60 in)



Baphomet 2005
Digital print on canvas
152.40 x 152.40 cm (60 in. x 60 in)



Molten 2005
Digital print on canvas
152.40 x 152.40 cm (60 in. x 60 in)



Amadova 2005
Digital print on canvas
152.40 x 152.40 cm (60 in. x 60 in)



Scree 2005
Digital print on canvas
152.40 x 152.40 cm (60 in. x 60 in)



Crépuscule 2005
Digital print on canvas
152.40 x 152.40 cm (60 in. x 60 in)



Rockface 2005
Digital print on canvas
152.40 x 152.40 cm (60 in. x 60 in)



Doll Face 2005
Digital print on canvas
152.40 x 152.40 cm (60 in. x 60 in)



Baphomet Installation FOFA GALLERY VITRINES , CONCORDIA UNIVERSITY, MONTRÉAL (QUÉBEC), 2006



Rewind Installation
HARTCOURT HOUSE ARTS CENTRE
EDMONTON, (ALBERTA)
2007



Virtual Chi-chi - Digital Prints on Paper



The Fish Room

2004
Digital Print
76.20 cm x 101.60 cm
30 x 40 in.



Interference 2004
Digital Print
76.20 cm x 203.20 cm
30 x 80 in.



Companion 2004
Digital Print
76.20 cm x 101.60 cm 30 x 40 in.



Blue Room Suite 1992
Digital Print, Screenprint,
76.20 cm x 304.80 cm
30 x 40 in. each (2' 6 in x 10' total)



Engrained 2004
Digital Print
76.20 cm x 101.60 cm 30 x 40 in.



Poisson vert 2004
Digital Print
76.20 cm x 101.60 cm 30 x 40 in.



The Fish Room 2004
Digital Print
76.20 cm x 101.60 cm 30 x 40 in.



Lime vif 2004
Digital Print
76.20 cm x 101.60 cm 30 x 40 in.



Rouge vif 2004
Digital Print
76.20 cm x 101.60 cm 30 x 40 in.



Virtual Eye 2003
Digital Print
101.60 x 76.20 cm 40 x 30 in.



Rewind Installation MUSÉE D'ART CONTEMPORAIN DES LAURENTIDES, ST-JEROME, QUEBEC, 2005

Chi-chi doggie - Woodcuts

Mambo V

2002
Woodcut
119.38 x 90.17 cm
47 x 35 in.



Noir 2003
Woodcut, screenprint, stamp
119.38 x 90.17cm 47 x 35 in.



Mambo V 2002
Woodcut
119.38 x 90.17cm 47 x 35 in.



Red Chi-chi 2003
Woodcut, screenprint,
121.28 x 60.32 cm 47 x 23 in.



Chi-chi tears: chicken legs 2004
Woodcut, screenprint
121.28 x 60.32 cm 47 x 23 in.



Chi-chi tears: feet 2004
Woodcut, screenprint, stamp
121.28 x 60.32 cm 47 x 23 in.



Chi-chi tears: facing 2004
Woodcut, screenprint, stamp
121.28 x 60.32 cm 47 x 23 in.

Noir

2003
Woodcut, screenprint, stamp
119.38 x 90.17cm
47 x 35 in.



Orange 2003
Woodcut, screenprint,
119.38 x 90.17cm 47 x 35 in.



Chi-Chi tears: no-see-em 2004
Woodcut, screenprint,
121.28 x 60.32 cm 47 x 23 in.



Chi-chi tears: rose 2004
Woodcut, screenprint
121.28 x 60.32 cm 47 x 23 in.



Chi-Chi bleu royale 2003
Woodcut, screenprint, stamps
119.38 x 90.17cm 47 x 35 in



Chi-Chi sculpture 2004
Woodcut



Rewind Installation MUSÉE D'ART CONTEMPORAIN DES LAURENTIDES, ST-JEROME, QUEBEC, 2005

Appendix A

TECHNICAL AND PRACTICAL INFORMATION

Michel Beaudry, Installation Technician

TOURING FEE:

Requested touring fee is \$5000 and the costs of return shipping (including packing, brokerage fees and insurance for the time during which the show is at your venue and in transit). Local promotions will be the responsibility of the touring venue. The touring fee will help to fund: the artist's touring fee, travel costs and honorarium, promotional costs, tour administration, tour technical support, crating of the art works, shipping costs, tour insurance for the replacement or repair of art work and equipment damaged in transit during the course of the tour.

CATALOGUE

The full colour, 64 page catalogue / artist-book with screen printed cover by Robert Bellemare (l'Atelier d'art Bellemare) and designed by Daniel Boutin includes essays in English, French, and Turkish. The texts are a blend of critical writing, poetry and experimental prose: critical essays from critic Pascale Beaudet, Süleyman Saim Tekcan (director of IMOGA-Istanbul Museum of Graphic Art) and artist-writer, Christine Unger, poetry from Christine Martel, and the experimental prose of Dr. Richard Purdy. All galleries and museums who take part in the tour will receive 15 copies of the catalogue for promotional and archival uses. The catalogue was funded and produced in collaboration between Musée d'art contemporain des Laurentides, Galerie Simon Blais and Éditions d'art Sabord.

THE SHOW INCLUDES WORKS FROM THE FOLLOWING SERIES

1. *Babel Tower* steel sculptures 10 ft x 4 x 4 feet, 22 LCD screens, 7 inches each ,
30 digitally printed arches on lexan on plexiglass,
15 video-loops with sound 2005
includes footage from the following:
 - a. *Threshold: Sensing the Dragon* video 2000
 - b. *Étate d'Âme* video 1998
 - d. *Burnings* video 1996
2. *Chi-Chi Doggie* 10 woodcuts 2003-2004
3. *Virtual Chi-Chi* 11 digital prints 2004
4. *Portes (Doorways)* 4 digital prints on lexan
121.92 x 134.62 cm (48 x 53 in.) each 2004
5. *Baphomet* 10 digital prints on canvas
152.40 x 152.40 cm (60 x 60 in.) each 2005
6. *Les coquelicots* 10 digital prints on canvas
152.40 x 152.40 cm (60 x 60 in.) each 2005
7. *Chi-chi doggie* 17 screenprint on wood sculptures 2004

TECHNICAL INFORMATION

The show will require fairly low lighting due to the video component. The artist will spend time in each tour location to work with your curator and technician to find the ideal installation for the space that is available.

Wall Space : approximately 68.58 running meters (225 feet) of wall space to hang prints and 60.96 meters (12.5 feet) running for variable video projection. These figures are flexible and can be adapted to the available space. For reference, each case of 10 large digital prints on canvas require a minimum of 25 running meters (82 running feet) to show.

Number of works to be shown: between 30 and 40

Projection: one digital video projector suitable for floor to ceiling projection is required. An aluminum framed 6 ft x 8 ft front or rear projection screen can also be provided if one is not available to you.

Video Monitors: The Babel Tower sculptures are made up of 22 LCD screens 7 inches each with video and sound as well as a tweeter and woofer for its sound components all of which we will provide.

Speakers: The show's video projection has a sound component and requires speakers.

SHIPPING INFORMATION

CRATE 1	60 x 28 x 48 in, 300 pounds Digital prints on canvas, <i>Coquelicots</i>
CRATE 2	60 x 28 x 48 in, 300 pounds Digital prints on canvas, <i>Baphomet</i>
CRATE 3	34 x 41 x 437 in, 250 pounds Tower frame top and 5 boxes of wiring, sound system components, dvd players, powersupplies and audio wire kits for Tower
CRATE 4	19 x 86 x 18 in, 200 pounds Tower frames and tops
CRATE 5	45 x 21 x 43 in, 180 pounds digital prints on paper
CRATE 6	40 x 97 x 15 in, 400 pounds woodcuts and masonite, Portes, Chi-chi sculptures, Interference digital print

TOUR DATES AS OF MAY 2007

VENUE	LOCATION	DATE
CANADIAN TOUR:		
Musée d'art contemporain des Laurentides	Quebec (Canada)	2005
Sir Wilfred Grenfell College Art Gallery	Newfoundland (Canada)	2006
FOFA Gallery (Concordia University)	Quebec (Canada)	2006
Harcourt House Arts Centre	Alberta (Canada)	2007
INTERNATIONAL TOUR:		
The Bob Rauschenberg Gallery	Florida (USA)	September -October 2008
Art Museum of the University of Memphis (AMUM)	Tennessee (USA)	November - January 2008-09
IMOGA, İstanbul Museum of Graphic Arts	Istanbul (Turkey)	Date to be determined

NOTE:

As some venues may not be able to accommodate this large and comprehensive exhibition, smaller exhibitions are available (with the Musée d'art contemporain des Laurentides' agreement) in the interim between tour dates. Crates have been made for each of the various series to be shipped separately. Separate proposals include:

(1) Rewind: Bonnie Baxter; tour proposal containing a wide range of print and multimedia artwork representing more than a decade of exploration by Bonnie Baxter.

(2) video projection containing Surreal and Cityscape videos and the Babel Tower sculpture, (10 ft x 4 ft x 4 ft), with a steel structure housing 15 small (7-inch) LCD Screens with looping video and sound components.

(3) the series Les coquelicots and/or Baphomet, each series consisting of 10 large format digital prints on canvas, each print measuring 60 in x 60 in.

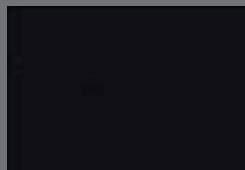
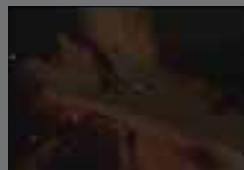
(4) 10 large format woodcuts from the Chi-chi Doggie series

If you are interested in seeing any of these proposals besides the proposal you are currently reviewing please contact bonnie@bonniebaxter.com

Surreal

Video sequence, 20 min

2000



Surreal

Video Still
2000

BONNIE BAXTER

bonnie@bonniebaxter.com

Born in Texarkana (Texas) USA
Studio and residence in Val-David (Québec) since 1969.
Has taught in the Print Media Program at Concordia University,
Montréal (Québec) since 1984. She has lectured extensively and given
workshops in Canada, Mexico, the USA and Turkey.

Education

Monticello College (Illinois) USA, Cranbrook Art Academy (Michigan)
USA, Vermont College at Norwich University (Vermont) USA / MFA

Solo Exhibitions

- 2007 Rewind, Hartcourt House Arts Centre, Edmonton, (Alberta)
2006 Baphomet, FOFA Gallery Vitrites, Concordia University, Montréal, (Québec)
2006 Rewind, Sir Wilfred Grenfell College Art Gallery, Memorial University of Newfoundland (Terre-Neuve)
2005 Coquelicots, Galerie Simon Blais, Montréal (Québec)
Rewind, Musée d'art contemporain des Laurentides, Saint-Jérôme (Québec)
2004 Chi-Chi Doggie - voyeur à contrecœur, Galerie Centre de diffusion Presse Papier, Trois-Rivières (Québec)
Virtuel Chi-Chi, Galerie Le Sabord, Trois-Rivières (Québec)
2003 Tentations, Centre d'exposition Maison du Village Val-David (Québec)
1998 État d'âme, Installation vidéo, Musée de Lachine, Lachine (Québec)
1995 Gueule de Bois, Là Galerie Centre Art Actuel, Trois-Rivières (Québec)
1994 Le Bal des Animaux, Édifi ce Belgo, Montréal (Québec)
1993 Icônes - Reliefs en Lumière, Installation, Centre d'exposition du Vieux-Palais, Saint-Jérôme (Québec) Illusions - Chimères, Galerie Rodrique Lemay, Ottawa (Ontario)
1992 Shazam, Galerie Barbara Silverberg, Montréal (Québec)
Deux Mille et Une Nuit, Galerie Estampe Plus (Québec)
Wood Imprints, Durham Art Gallery, Durham (Ontario)
Recent Prints, Open Studio, Toronto (Ontario)

Video - Performance - New Media (selection)

- 2006 Tramontano, MUFF (The Montreal Underground Film Festival), Montréal (Québec)
Tramontano, FOFA Gallery Vitrites, Concordia University, Montréal, (Québec)
2003 J'suis pas raciste...mais, La Raza, Centre culturel Maison du Village, Val-David (Québec)
2002 Shout at Eternity, Piscine Saint-Michel, Montréal (Québec)
2001 Threshold, featured event with Mercan Dede Ensemble, Festival international de Jazz de Montréal (Québec)
2000 Threshold: Sensing the Dragon, Saint-Norbert Arts Centre (Manitoba)
État d'Âme, Maison de la culture Frontenac, Montréal (Québec)
1999 Mad Hatter's Tea Party, (in conjunction with the World Tea Party) Saint-François-Xavier (Manitoba)
Right Brain / Left Brain / Confi gurations, Vermont College, Montpelier (Vermont) USA
1998 Burnings, Leonard & Bina Ellen Gallery, Montréal (Québec)
1997 Eros - Death - Ecstasy, site Internet, <http://baxter.inrs-urb.quebec.ca/>
Chaconne, performance vidéo, Vermont College, Montpelier (Vermont) USA
1996 Burnings, Installation vidéo, Vermont College, Montpelier (Vermont) USA

Group Exhibitions (selection)

- 2007 Biennale internationale d'estampe contemporaine de Trois-Rivières, Trois-Rivières, (Québec)
Histoire de passions, Espace Création Loto-Québec, Montréal (Québec)
Graphzines et Autres publications d'Artistes, Bibliothèque et Archives Nationales du Québec,
Centre de conservation, Montréal, (Québec)
Salon Écarlate, Marian Graves Mugar Art Gallery, Colby Sawyer College, New London, (New Hampshire) USA
2006 12th International Biennial Print and Drawing Exhibition, R.O.C., National Museum of Fine Arts,
National Kaohsiung Normal University, Angel Art Gallery, Kuandu Museum of Fine Arts, Taiwan,
R.O.C. (selected prize award in the print category)
Bharat Bhavan International Biennial of Print-Art, Roopankar Museum of Fine Arts, Bhopal, India
2005 Les Amériques Baroques, la Fondation Derouin symposium international d'art in situ 2005 Val
David (Québec)
2004 La Collecte, travelling exhibition, Sao Paulo, Brésil, Akademia Serbie à Belgrade
XIe Biennale internationale de la gravure et des nouvelles images de Sarcelles-Val de France,
France
Voilà Québec, Musée de Las Artes de l'Université de Guadalajara, Mexico
Biennale international d'estampe contemporaine de Trois-Rivières, Trois-Rivières (Québec)
Les Femmeuses, Pratt & Whitney Canada, Longueuil (Québec)
Encan d'oeuvres d'art Le Sabord, Trois-Rivières (Québec)
2001 Voir Grand, concours et exposition, l'Atelier circulaire, Montréal (Québec)
2000 D'où venons-nous? Que sommes-nous? Où allons-nous? Maison de la culture Frontenac,
Montréal (Québec)
L'autre heure..., livre d'artiste avec artistes de l'Atelier de l'Île, Musée des beaux-arts de Montréal
(Québec)
1999 Mythologie des lieux, International Symposium and Exhibition, Centre d'exposition du Vieux
Palais, Saint Jérôme (Québec)
Loto-Québec 20 ans, Loto-Québec, Montréal (Québec)
Substances de l'Encre, livre d'artiste avec artistes de l'Atelier de l'Île, Bibliothèque nationale du
Québec, Montréal (Québec)
1998 In Situ Canadian Prints Now, Sightlines Printmaking and Image Culture, University of Alberta,
Edmonton (Alberta)
1997 Une fiction de l'Atelier, en cause Brancusi, Axe Néo-7 Art Contemporain, Hull (Québec)
ARTiculture, Maison de la culture du Plateau Mont-Royal, Montréal (Québec)
1994 International Print Triennial - Cracow 94, Poland
Le Lieu de l' tre, Musée du Québec (Québec)
1993 La Biennale du dessin, de l'estampe et du papier matière du Québec, Alma (Québec)
1994 Saga 65th National Print Exhibition, New York City, USA
Écritures Sur Bois, exposition itinérante, Musée Laurier, Arthabaska, Musée de la CôteNord
(Québec)
What a Relief!, Tribeca 148 Gallery, New York City, USA
Paradise Endangered, Baltimore City Hall Courtyard Galleries (Maryland) USA
Singulier / Pluriel, Maison de la culture Frontenac, Montréal (Québec)
1992 Saga 92, FIAC Édition grand Palais, Paris, France.
Contes, légendes et poèmes du Québec, Musée d'art Saint-Laurent (Québec)
1991 Intergrafi a 1991, Exposition internationale de la gravure, Katowice, Poland
Plein la vue l'estampe, Musée du Bas-Saint-Laurent, Rimouski (Québec)
Xth International Art Biennial Valparaiso, Chile.
Totem de Piedras, Galerie Simon Blais, Montréal (Québec) ; Museo Nacional de l'Estampa,
Mexico; Museo de Arte Contemporaneo, Morelia, Mexico ; Galeria Praxis, Mexico
Print Types, Owatonna Art Center, Owatonna, New Mexico.
Medicine Hat Print Show, National Compétition, Medicine Hat Museum (Alberta)

- 1991 Teas 91, International Salon d'Art, Tokyo, Japan
 Québec Prints/Estampes Québécoises, Itinerary Exhibition, Washington, USA
 OEvres canadiennes contemporaines, Mairie de Coaraze, France
 6e Biennale de l'estampe, Centre Municipal d'Arts Plastiques, Sarcelles, France
 La Biennale du dessin, de l'estampe et du papier du Québec, Galerie Lavalin, Montréal (Québec)
 Saga 90, FIAC Édition, Grand Palais, Paris, France
- 1989 La Biennale du dessin, de l'estampe et du papier matière du Québec, Alma (Québec)
 Mutations, Merit Award, Maison Hamel-Bruneau, Sainte-Foy (Québec)

Public Art

Intégration des Arts à l'Architecture et à l'Environnement (projet de 1%), Ministère de la Culture et des Communications du Québec

- 1998 École primaire Saint-Eustache
 1997 École de la Clairière, Boisbriand
 1995 Camp Musical des Laurentides, Saint-Adolphe d'Howard
 1994 École primaire de Blainville Nord, Sainte-Thérèse

Master-Printer

- 1982-1998 Founder and Director of Custom Print-shop, Atelier du Scarabée, collaborations with artist such as Kitty Bruneau, Francine Simonin, and Hollis Jeffcoat.
 1985-1993 Complete corpus of etchings by Jean-Paul Riopelle.

Professional Activities (selected)

- 2007 Honorary Lifetime member of ARPRIM, Regroupement pour la promotion de l'art imprimé / Association for the Promotion of Printed Art, (Québec)
- 2006 Présidente d'honneur, exposition des finissants en arts visuels de l'université Laval, Québec (Québec)
 Présidente d'honneur, Voir autrement, expo bénéfice ARPRIM, Montréal (Québec)
- 2004 Catalogue essay, Milestones in Printmaking, Meridian International Centre, Washington D.C., USA
- 2002-2003 J'suis pas raciste... mais, Concept et coordination d'un cahier pédagogique pour les écoles publiques
- 2000-2001 Membre du comité de sélection en art visuel (personne ressource) La politique d'intégration des arts à l'architecture et à l'environnement
- 2000 Membre du jury - A grant - Conseil des arts et des lettres du Québec
- 1999 Public Art as Social Intervention Symposium Production team; teaching web site development
- 1993-2000 Board of Directors, American Print Alliance, USA
- 1992 Board of Directors, PDCC, The Print and Drawing Council of Canada, Toronto (Ontario)
 Board of Advisors, CIMA-Contemporary, International Museum of Art (Georgia) USA
- 1994-1998 Vice-présidente, Conseil québécois de l'estampe, Montréal (Québec)
- 1993 Organizing Committee for 1993 IAPMA, International Association of Papermakers and Paper Artists
- 1989-1990 Membre du jury, Ministère de la culture et des communications : Intégration de l'art à l'architecture et l'environnement.

Grants

- 2006 honorable mention award, 7th Bharat Bhavan, International Biennial of Print Art, Bhopal, India
- 2005 Prix à la création artistique en région, du Conseil des arts et des lettres du Québec, lors des Grands Prix de la culture des Laurentides
- 2004, 1992, 1991, 1989, 1987, 1979 Bourse de recherche et création, Conseil des arts et des lettres du Québec
- 2004 Travel Grant, Canada Council for the Arts
- 2003, 2002, 2001, 2000, 1999, 1998, 1993 Professional Development Grant, Concordia University Part-Time Faculty Association
- 1999 Soutien à la Concertation Culture - Éducation entre le Centre d'exposition du Vieux Palais, la fondation Derouin et l'Université Concordia



Portes / Doorways, 2005

video stills on lexan
 each: 53 x 48 inches (134.62 x 121.92 cm)